

Dann Marine Towing, LC

CANAL PLACE

Post Office Box 250 / Chesapeake City, Maryland 21915
 (410) 885-5055 / (800) 770-TUGS / FAX (410) 885-5570



DMT1501 & DMT1502

Reading Date		Aft Freeb'd Stbd	12.00 ft	0.375 in
Barge Length - ft	200.00	Aft Freeb'd Port	12.00 ft	0.375 in
Barge Width - ft	35.00	Aft Freeb'd Location	8.75 ft fwd stern	
Barge Depth - ft	12.00	Fwd Freed'b Stbd	12.00 ft	0.375 in
Main Deck Plate - in	0.38	Fwd Freeb'd Port	12.00 ft	0.375 in
Headlog Height - ft	11.75	Fwd Freeb'd Location	170.00 ft fwd stern	
Rake Tan Aft Bow - ft	27.33	Water Den - cu.ft/ton	32.00 fresh water	
Output	Displacement	300 tons		
	WL Length	172.67 ft		
	LCF Draft	0.00 ft		

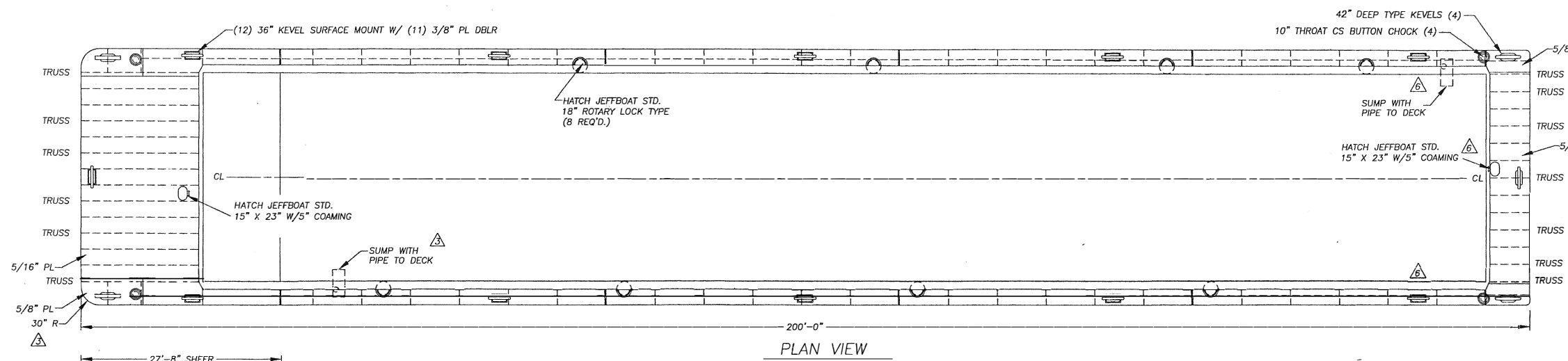
FEET TENTHS	SHORT TONS DISPLACEMENT										
	1	2	3	4	5	6	7	8	9	10	11
0.0	195	395	599	805	1014	1224	1436	1649	1864	2081	2298
0.1	215	416	620	826	1035	1245	1457	1671	1886	2102	2320
0.2	235	436	640	847	1056	1266	1478	1692	1907	2124	2342
0.3	255	456	661	868	1076	1287	1500	1714	1929	2146	2363
0.4	275	477	681	888	1097	1308	1521	1735	1951	2167	2385
0.5	295	497	702	909	1119	1330	1542	1757	1972	2189	2407
0.6	315	517	722	930	1140	1351	1564	1778	1994	2211	2429
0.7	335	538	743	951	1161	1372	1585	1800	2016	2233	2451
0.8	355	558	764	972	1182	1393	1607	1821	2037	2254	2473
0.9	375	579	785	993	1203	1415	1628	1843	2059	2276	2494

Table for barge afloat on even keel (no trim or list) in fresh water

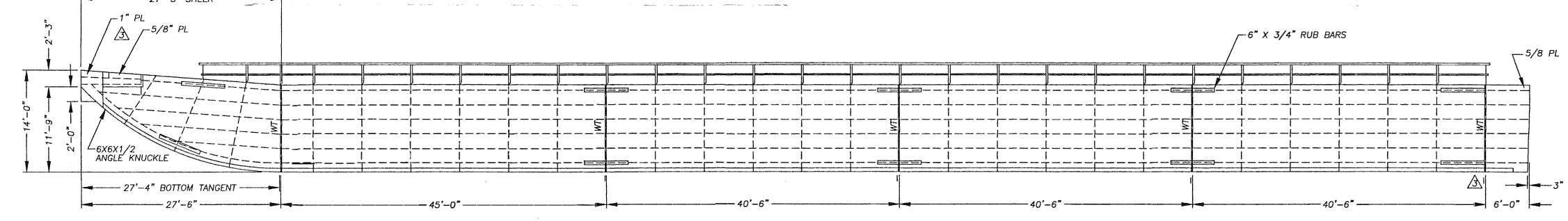
REFERENCE DRAWINGS		
NO.	TITLE	DRAWING NO.
1		

GENERAL NOTES

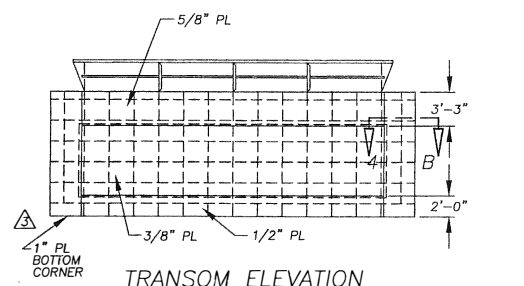
- COATINGS
 - ALL STEEL TO BE WHEELABRATED AND COATED W/ZINC PRIMER, 3/4 MDT.
 - 5-7 MDT EPOXY ON BOTTOM, SIDES, ENDS, DECKS AND COAMING
 - ADD SAND TO DECK FOR NON-SKID SURFACE
 - VOID COAT IN INNERBOTTOM & 2' UP SIDES IN ALL VOIDS AND FULL HEIGHT IN WAY OF HATCHES - 3 TO 4 MDT ROYAL COAT
- THIS HULL ADAPTABLE TO TELESCOPING COVERS W/MODIFICATION TO END COAMINGS.
- HOPPER CAPACITY TO TOP OF COAMING 67,700 CUBIC FEET.
- BARGE WEIGHT (OPEN) 302 TONS.
- PAINT ALL DECK FITTINGS WHITE



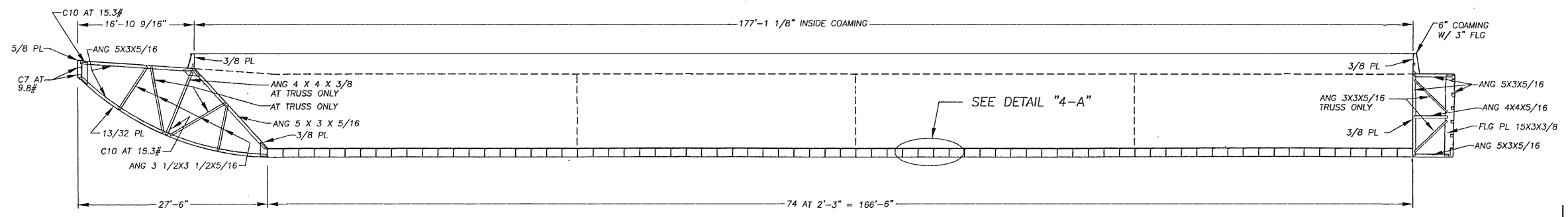
PLAN VIEW



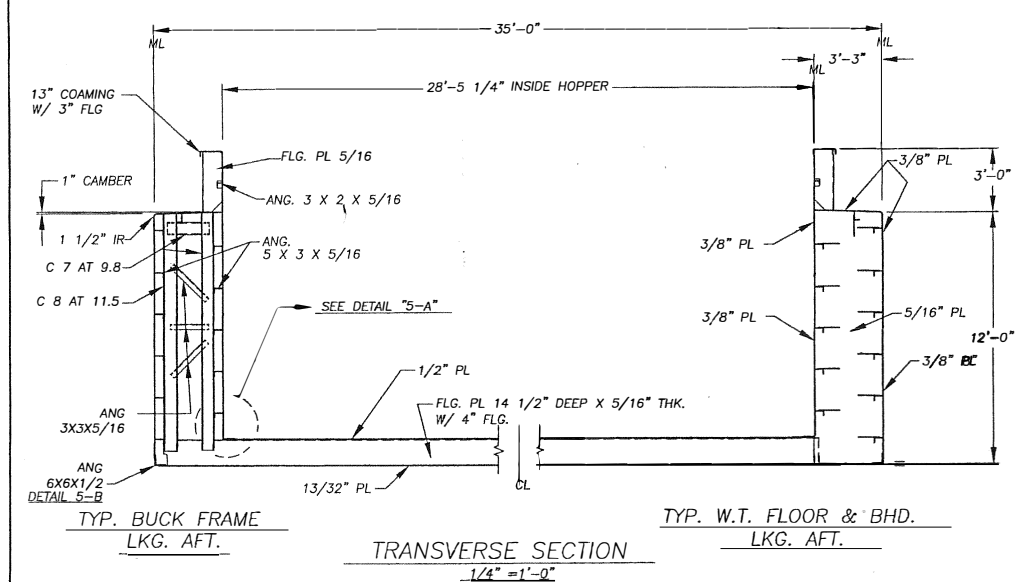
SIDE ELEVATION



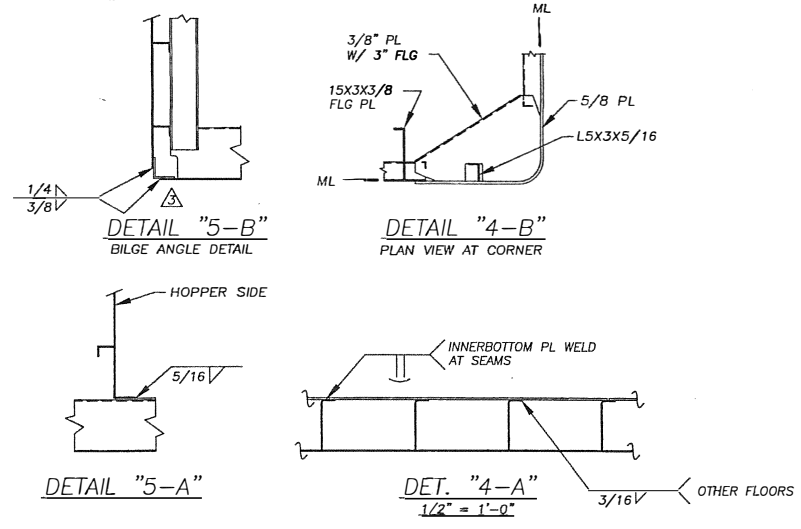
TRANSOM ELEVATION



LONG'L. SECTION



TRANSVERSE SECTION



DETAIL "5-B"

DETAIL "4-B"

DETAIL "5-A"

DET. "4-A"

CARGO TABLE

DRAFT	OPEN FRESH WATER TONS CARGO	STEEL T&R COVERS FRESH WATER TONS CARGO
8'-0"	1,347	1,302
8'-6"	1,455	1,410
9'-0"	1,562	1,517
9'-6"	1,670	1,625
10'-0"	1,778	1,733
10'-6"	1,887	1,842

TABLE BASED ON HULL WEIGHT OF 302 SHORT TONS
TABLE BASED ON COVER WEIGHT OF 45 SHORT TONS

NO.	REVISIONS	BY	DATE
6	ADD 2 KEVELS & REV STERN HATCH PER CUST	DWW	1/27/04
5	UPDATE FOR 2004 BARGES	DWW	1/21/04
4	REV. FLOOR FRAME WELDS - 2004 BARGES	ERS	12/17/03
3	REVISED PER CUSTOMER	JAL	2/2/01
2	REVISED STERN MANHOLE TO RAISED TYPE	ERS	12/12/00
1	REVISED FLOOR FRAME ENDS AND MANHOLES	ERS	10/31/00