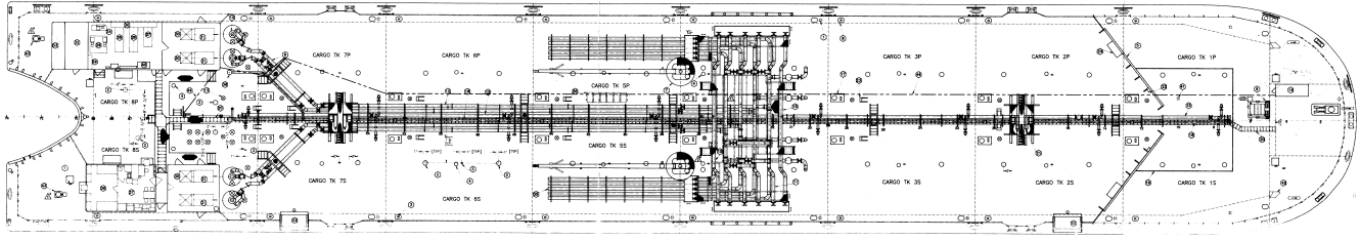


DMT 140

BARGE PARTICULARS



PARTICULARS per OCIMF Guidelines: (U.S./Metric measures)	
OPERATOR	DANN MARINE TOWING, LC
NAME	DMT 140
BUILDERS	GRETNA MACHINE & IRON WORKS
SERVICE	Oceans; Articulated Tug/Barge unit; Oil Grade A & lower, sub-chapter "D" cargo; 46 CFR sub-chapter "O" part 153 cargo
OFFICIAL NO.	998038
CLASSIFICATION	+A1 OIL TANK BARGE
USCG COI	TO BE ISSUED
USCG COD	ISSUED: JUNE 6, 2022 EXPIRES: JUNE 30, 2023
USCG STABILITY LETTER	ISSUED BY: ABS 11 JANUARY 2013
USCG IOPP CERTIFICATE	TO BE ISSUED
USCG IAPP CERTIFICATE	TO BE ISSUED
U.S. TONNAGE CERTIFICATE	TO BE ISSUED BY RINA
INT'L TONNAGE CERTIFICATE	TO BE ISSUED BY RINA
IMO MARPOL VI CERTIFICATE (IAPP)	TO BE ISSUED
TIN FREE COATING CERTIFICATE	TO BE ISSUED BY RINA
POLLUTION LIABILITY	
COFR	COFR # 878672

DMT 140

BARGE PARTICULARS

GRT REGULATORY ITC	9245 10709
NRT: REGULATORY ITC	9245 6249
L.O.A.	483' – 3" ; 147.29 m"
L.B.P.	345' 7-7/16" ; 105.34 m
BEAM	80' – 0" ; 24.38 m
DEPTH CENTERLINE SIDESHELL	37' – 2" ; 11.33 m 36' – 2" ; 11.02 m
DRAFT LIGHT	7'-6" aft, 4'-9" fwd ; 2.29 m aft, 1.45 m fwd
DISPLACEMENT	4164.94 L.T.; 4231.77 m/t
LOAD LINE SUMMER	9'-11-11/16" below deck edge
FRESHWATER ALLOWANCE	6-9/16" ; 166.62 mm
DISPLACEMENT SW	25,009 LT ; 25,410.32 m/t
FUEL TANK CAPACITY	4900 gal ; 18,548.52 ltr
Metric abbreviation:	
m/t= metic ton; m3=cubic meter; kg=kilogram; m=meter; mm=millimeter;	
ltr=liter; kw=kilowatt; TCM=tonnes per centimeter	
DMT – 140 PARTICULARS	
POTABLE WATER CAPACITY	717 gals ; 2,714 ltr
GREY WATER TANK CAPACITY	N/A
DOUBLE BOTTOM HEIGHT AT KEEL AT KEELSON	5'-6" ; 1.68 m 5'-9-3/4" ; 1.75 m
DEADRISE	6" ; 152.4 mm
DECK CAMBER	1' – 0"; 304.8 mm

DMT 140

BARGE PARTICULARS

MAST HEIGHT FORWARD	32 FT ; 9.75 m
AIR DRAFT	Light Draft – 64' 11" ; 19.79 m Ballast Draft – 53' 8" ; 16.36 m LL Draft – 43' 5" ; 13.23 m
CARGO TANK DIMENSIONS NO. 1 PORT & STBD NO. 2 PORT & STBD NO. 3 PORT & STBD NO. 4 PORT & STBD NO. 5 PORT & STBD NO. 6 PORT & STBD NO. 7 PORT & STBD NO. 8 PORT & STBD	50'-10-1/2" X 33'-5" X 31' ; 15.51m X 10.19m X 9.45m 50'-10-1/2" X 33'-5" X 31' ; 15.51m X 10.19m X 9.45m 50'-10-1/2" X 33'-5" X 31' ; 15.51m X 10.19m X 9.45m 50'-10-1/2" X 33'-5" X 31' ; 15.51m X 10.19m X 9.45m 50'-10-1/2" X 33'-5" X 31' ; 15.51m X 10.19m X 9.45m 50'-10-1/2" X 33'-5" X 31' ; 15.51m X 10.19m X 9.45m 44'-6-3/16" X 33'-5" X 31' ; 13.57m X 10.19m X 9.45m 57'-2-13/16" X 33'-5" X 31' ; 17.44m X 10.19m X 9.45m
BOW FOREPEAK DIMENSION	30' X 40' X 36'2" ; 9.14m X 12.19m X 11.02m
STERN RAKE DIMENSION	46'-3" X 40 X 36'2" ; 14.1m X 12.19m X 11.02m
BOW THRUSTER	NONE
HULL PLATING: BOTTOM PLATING BELOW CHINE SHELL PLATING KEEL PLATING KEELSON PLATING DOUBLE BOTTOM FLOOR PLATING CENTERLINE BULKHEAD DECK WING TANK BULKHEAD DECK/SHELL CONNECTION RADIUS AT TANK BOTTOM	5/8" ; 15.88 mm 9/16" ; 14.29 mm 1/2 " ; 12.7 mm 7/16" ; 11.11 mm 7/16" ; 11.11 mm 1/2" ; 12.7 mm 7/16" ; 11.11 mm 16" ; 406.4 mm 12" ; 304.8 mm
PARTICULARS: CARGO SYSTEM	
HULL TYPE	DOUBLE HULL
CARGO GRADE	GRADE A and LOWER; All Sub-Chapter "D" Cargo, 46CFR153 Sub-Chapter O cargo.
VAPOR RECOVERY SYSTEM	YES IGS: NONE
TANK CAPACITY @ 100% NO. 1 PORT & STBD	(P&S) 8732.7 bbl ; 307.73 m3 ea.

DMT 140

BARGE PARTICULARS

NO. 2 PORT & STBD NO. 3 PORT & STBD NO. 4 PORT & STBD NO. 5 PORT & STBD NO. 6 PORT & STBD NO. 7 PORT & STBD NO. 8 PORT & STBD	(P&S) 9305.6 bbl ; 327.92 m3 ea. (P&S) 9305.6 bbl ; 327.92 m3 ea. (P&S) 9305.6 bbl ; 327.92 m3 ea. (P&S) 9305.6 bbl ; 327.92 m3 ea. (P&S) 9305.6 bbl ; 327.92 m3 ea. (P&S) 8142.4 bbl ; 286.93 m3 ea. (P&S) 8709.4 bbl ; 306.91 m3 ea.
CARGO PUMPS	(4) – DD 12V71/S.C.ENG. 12N X 16D 3 STAGE 3800 GPM EACH
CARGO SEGREGATION	(3) THREE PRODUCTS. DOUBLE BLOCK VALVES PER SET OF TANK ON NO.S 4, 6 AND 8 CARGO TANKS
CARGO MANIFOLDS	(6) CARGO DECK CROSS OVER PIPING WITH BLOCK VALVE (4) (P&S) SHORE CONN. MANIFOLDS 12"; 304.8 mm (4) (P&S) HOSE CONN MANIFOLDS, 8" , 203.2 mm
CARGO STRIPPING SYSTEM	2", 50.8 mm STRIPPING LINE ON CENTERLINE. Connection at port and stbd side of loading manifold.
CARGO PIPING DECK	12" , 304.8 mm
LOADING DROPS	(4) 12" ; 304.8 mm DIA.
PUMP SUCTION	(4) 16", 406.4 mm
CARGO PIPING (BOTTOM)	MAIN – 16", 406.4 mm SUCTION – 12", 304.8 mm
DOUBLE BLOCK VALVE	AT BRANCH SUCTION TO TANKS NO. 4, 6 AND 8
CHECK VALVE	AT EACH PUMP DISCHARGE
TANK VALVES	116 TOTAL
CARGO PIPELINE FILL BELOW DECK	No.1 – 3,227 gals ; 12,217 ltrs No 2 – 2,277 gals ; 8,619 ltrs No 3 – 1,693 gals ; 6,410 ltrs No 4 – 1,693 gals ; 6,410 ltrs
PIPE FILL ABOVE DECK	No 1 – 1,633 gals. ; 6,183 ltrs No 2 – 1,622 gals. ; 6,138 ltrs No 3 – 1,622 gals. ; 6,138 ltrs No 4 – 1,633 gals. ; 6,183 ltrs
PUMP DEEP WELLS	(4) ea. 30" dia X 9 ft & 24" dia X 22 ft 762 mm X 2.74 m & 609.6 mm X 6.71 m. 847 gals. ; 3,208 ltrs each pump well
CHIKSAN/SHORE HOSE MANIFOLD DISTANCE FROM BOW:	

DMT 140

BARGE PARTICULARS

LINE 1	217 FT.; 66.14 m
LINE 2	212 FT ; 64.62 m
LINE 3	207 FT ; 63.09 m
LINE 4	202 FT. ; 61.57 m
DISTANCE FROM STERN	
LINE 1	265 FT.; 80.77 m
LINE 2	271 FT. ; 82.6 m
LINE 3	276 FT. ; 84.12 m
LINE 4	281 FT. ; 85.65 m
MANIFOLD DECK HEIGHT	5.14 FT.; 1.57 m
HEIGHT ABV WATERLINE	LIGHT SHIP: 35.18 FT. ; 10.72 m
HEIGHT FULL BALLAST	25.31 FT. ; 7.71 m
VAPOR MANIFOLD	
DIST FROM BOW	198 FT. ; 60.35 m
DIST FROM STERN	261 FT. ; 79.55 m
PUMPS	(4) DD 12V71 driving (4) S.C. Eng. 12NX16D 3 stage pumps 3800 GPM per pump
REMOTE STATION SHUTDOWN	MANUAL SHUTDOWN
CARGO TANK ALARM SYSTEM	JOWA Deck Master II with high level and overflow alarms. Visual and audible alarms on Xmas tree forward of loading manifold and at office display panel.
CARGO VENTING SYSTEM	INDIVIDUAL TANK 2-1/2"; 63.5 mm PV
VAPOR RECOVERY SYSTEM	Load rate 13400 bbl/hr ; 2,130 m3/hr 10" ; 254 mm P/V valve @ 1.75 psi ; 0.12 bar
GAUGING SYSTEM	CLOSED SYSTEM WITH MMC TAPE GAUGING

BALLAST SYSTEM

BALLAST CAPABILITY	61,051.6 bbls ; 9,706.43 m3
BALLAST PUMPS	(2) JOHN DEERE 6068 / BYRON JACKSON LS14GH
BALLAST TANK COATING	Ameron
FUEL TANK	4,900 gals. ; 18,548.52 ltr

HOSE CRANES

HOSE CRANES	(2) APPELTON ELECTIC/HYDRAULIC 60 FT, 18.29 m JIB, 2000 LB,.907 m/t SWL
-------------	--

GENERATORS	(2) DD 6-71 / 99 KW
------------	---------------------

DMT 140

BARGE PARTICULARS

	(1) DD 3-71 / 30 KW HARBOR GEN
SHORE POWER	100 amp
AIR COMPRESSOR	QUINCY 240L

MOORING SYSTEM	
ANCHOR WINDLASS	Coastal Equipment – MD-1W18134-124-00 Serial # 147551212
ANCHOR	Stockless 7500# ; 3447 kg. with 7 shots 1-9/16" chain
CAPSTANS	(2) Aft. Coastal Equipment – MD# C4.8-0-41-131 Port Ser# 16109B118 Stbd Ser# 16109A118
DRUM WINCHES	(4) Coastal Equipment 1MZ0112D3-1-00 Hydraulic Mooring winches each fitted with; 300 ft. 1-1/4" 12 strand plazma line and 36 ft. 2-5/8" 8 strand polydac line with chaffing gear.
DOUBLE BITTS	(5) 12" ; 304.8 mm
ROLLER CHOCKS	9" ; 228.6 mm for 9" ; 228.6 mm line
CLEATS	(18) 36" ; 914.4 mm
CLOSED CHOCKS	22" X 11" ; 558.8 mm X 279.4 mm
TOW PAD EYE	Emer. Tow Wire – 420' ; 128 m X 2-1/4"; 57.15mm
FENDERS	N/A
BUTTERWORTH PLATES	(32) – 2 at each cargo tank
OIL SPILL DECK DRAIN	Oil spill containment bins at port and stbd transverse loading manifolds and port and stbd hose loading manifolds. Containment drains into No. 4 port & stbd cargo tanks with 2" gate valve on bottom of containment bin.
CARGO EXPANSION TANKS	(16) 59-3/8" X 32-3/4" X 24" ; 1.51m X 0.83m X 0.61m 19" ; 482.6mm Round raised man hole cover.
OIL SPILL RAIL	8" ; 203.2mm high covering entire cargo envelope
EMERGENCY OIL SPILL BOOM	TO BE DETERMINED
NAV LIGHTS	120 VAC – Nav panel in Cargo Office
FLOOD LIGHTS	(6) 225 watt LED Cargo Floods. (2) 150 watt Floods Aft P&S Deck Houses
CARGO OFFICE	CARGO ALARM PANEL GALLEY SINK

DMT 140

BARGE PARTICULARS

	REFRIGERATOR/FREEZER DESK W/ THREE CHAIRS A/C AND HEAT
COATINGS DECK EDGE TO 16' / 4.88 M 16'/4.88M DRAFT TO BTM DECK DECK FITTINGS HANDRAILS	Sherwin Williams SeaGuard 5000 HS Black Sherwin Williams Seagard Antifoulant Blue Sherwin Williams XLE-80 Dann Grey Sherwin Williams XLE-80 Dann Blue Sherwin Williams XLE-80 Dann Yellow
CATHODIC PROTECTION	WILSON WALTON IMPRESSED CURRENT FOR UNDERWATER HULL
SACIFICIAL ANODES	25 LB ALUM ANODES – 2 PER BALLAST TANK
CARGO TANK COATING	NOVA PLATE 890
BALLAST TANK COATING	Ameron

